



FOOD SERVICE & CULINARY

2024



1392 Men's / **5392** Ladies' Banded Collar Shirt



1291 Men's / **5291** Ladies' Café Shirt



5293 Ladies' Long-Sleeve Blouse



1292 Men's Long-Sleeve Dress Shirt



5292 Ladies' 3/4-Sleeve Blouse



BATISTE SHIRTS & BLOUSES



FEATURES:

- 100% Polyester
- Lightweight and durable tonal fabric
- 3M Scotchgard™ finish
- Covered placket

SIZES:

Men's S-3XL, MT-6XL, Scale H
Ladies' XXS-4XL, Scale O

FIT:

Traditional

COLORS:

000 White, 010 Black, 012 Red, 013 Burgundy, 053 Purple, 079 Steel Grey, 406 Riviera Blue, 423 Caribbean Blue, 429 Cobalt, 901 Platinum

1398 Men's / **5398** Ladies' Stand-Up Collar Shirt

	000	010	012	013	053	079	406	423	429	901
1291	▪	▪		▪	▪	▪	▪	▪	▪	▪
1292	▪	▪				▪				▪
1392	▪	▪		▪		▪	▪			
1398		▪	▪	▪	▪	▪	▪	▪	▪	▪
5291	▪	▪		▪	▪	▪	▪	▪	▪	▪
5292	▪	▪		▪		▪	▪			▪
5293	▪	▪								▪
5392	▪	▪		▪		▪	▪			
5398		▪	▪	▪	▪	▪	▪	▪	▪	▪



5041 Ladies' Shirt

MELANGE CAMP SHIRTS

NEW COLORS



FEATURES:

- 100% Polyester
- Ultra-Light fabric keeps you cool
- 3M Scotchgard™ finish

SIZES:

Men's S-3XL, 4XLT-6XLT, Scale H
Ladies' XXS-4XL, Scale O

FIT:

1039: Traditional
5041: Tailored

COLORS:

959 Cool Grey Heather,
973 Burgundy Heather (new), 977
Black Heather (new),
981 Carolina Blue Heather



1039 Men's Shirt



Retail-inspired melange pattern.



5290 Ladies' Café Shirt



1290 Men's Café Shirt



1396 Men's Banded Collar Shirt



5396 Ladies' Banded Collar Shirt

HOSPITALITY BROADCLOTHS



FEATURES:

- 65% Polyester/35% Cotton
- Lightweight, durable fabric
- Covered placket

SIZES:

Men's S–3XL, MT–6XLT, Scale H
Ladies' XXS–3XL, Scale K

FIT:

Traditional

COLORS:

000 White, 009 Dark Grey, 010 Black,
041 Royal

	000	009	010	041
1290	▪		▪	▪
5290	▪		▪	▪
1396	▪	▪	▪	
5396	▪	▪	▪	



1036 Two-Color Hibiscus Shirt



1031 Batiste Service Shirt

CAMP SHIRTS



FEATURES:

- 100% Polyester
- Lightweight and durable tonal fabric
- 3M Scotchgard™ finish
- Side vents

SIZES:

Unisex XXS–6XL, Scale V

FIT:

Traditional

COLORS:

001 Blue, 010 Black, 013 Burgundy, 079 Steel Grey, 124 Aqua, 403 Sapphire, 406 Riviera Blue, 501 Slate Blue, 901 Platinum



1035 Multicolor Hibiscus Shirt



1030 Jacquard Shirt



1030											
1031											
1035											
1036											



1038 Bengal Ultra-Stretch Camp Shirt



1032 Tropical Print Camp Shirt

CAMP SHIRTS



FEATURES:

- 1038: 93% Polyester/7% Spandex
- 1032: 55% Cotton/45% Polyester
- Bengal Stripe Shirt has 3M Scotchgard™ finish and French placket with half-hidden button placket
- Tropical Shirt has open neck notched collar and side vents
- 1038 features comfort stretch, moisture wick, and soil release; both styles are Home Launder

SIZES:

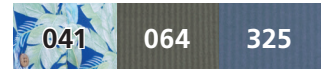
1038: Unisex XXS–3XL, 4XL–6XL, Scale V
 1032: Unisex XXS–6XL, Scale V

FIT:

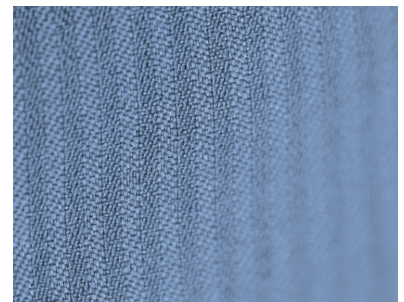
1038: Tailored
 1032: Traditional

COLORS:

041 Royal, 064 Olive, 325 Blue Graphite



1032	■		
1038		■	■



Tone-on-tone bengal stripe pattern.

NEW STYLE

5570

Ladies' Split
Neckline Polo





5507 Ladies' Polo

MINI-PIQUE POLOS



FEATURES:

- 100% Polyester
- Snag-proof
- Budget friendly polo for any program or event
- Hemmed bottom and sleeves

SIZES:

Men's S-3XL, 4XLT-6XLT, Scale H
 5507: Ladies' XXS-4XL, Scale O
 5570: Ladies' XS-3XL, Scale O
 Unisex XXS-3XL, 4XLT-6XLT, Scale V

FIT:

1507/5507/1527: Traditional
 5570: Tailored

COLORS:

000 White, 010 Black, 012 Red, 041 Royal, 061 French Blue, 079 Steel Grey, 091 Marina Blue, 249 High Visibility Lime, 393 High Visibility Orange, 432 Bright Navy, 909 Cool Grey



1507 Men's Polo



1527 Unisex Long-Sleeve Polo

	000	010	012	041	061	079	091	249	393	432	909
1507	■	■	■	■	■	■	■	■	■	■	■
1527	■	■	■	■	■	■	■	■	■	■	■
5507	■	■	■	■	■	■	■	■	■	■	■
5570	■	■	■	■	■	■	■	■	■	■	■

5500
Ladies' Polo





1500 Men's Polo

SOFT TOUCH POLOS



FEATURES:

- 65% Polyester/35% Cotton
- Soft, yet durable cotton fabric
- Side vents

SIZES:

Men's S-3XL, 4XLT-6XLT, Scale H
 Ladies' XXS-4XL, Scale O
 Unisex XXS-3XL, 4XLT-6XLT, Scale V

FIT:

Traditional

COLORS:

007 Navy, 010 Black,
 012 Red, 013 Burgundy, 041 Royal,
 056 Grey Heather, 091 Marina Blue

007	010	012	013
041	056	091	



1505 Unisex Polo with Pocket



1576 Men's / **5576** Ladies'
Polo



1578 Unisex Long-Sleeve Polo

HI-PERFORMANCE MESH POLOS



FEATURES:

- 100% Polyester
- Excellent UV Protection
- Antimicrobial finish
- Food Service Polo has three gripper-snap placket

SIZES:

Men's S-3XL, 4XLT-6XTL, Scale H
 Ladies' XXS-4XL, Scale O
 Unisex XXS-3XL, 4XLT-6XTL, Scale V

FIT:

Traditional

COLORS:

000 White, 001 Blue, 005 Tan, 007 Navy, 010 Black, 012 Red, 013 Burgundy, 041 Royal, 053 Purple, 079 Steel Grey, 084 Hunter, 091 Marina Blue, 427 Ceil, 501 Slate Blue



1586 Unisex Food Service Polo

	000	001	005	007	010	012	013	041	053	079	084	091	427	501
1576	■	■	■	■	■	■	■	■	■	■	■	■	■	■
1578				■	■									
1586	■			■	■					■		■		
5576	■	■	■	■	■	■	■	■	■	■	■	■	■	■



NEW STYLE

5524

Ladies' Lightweight
Polo with Split



1522 Men's / **5522** Ladies' Lightweight Polo



1512 Men's / **5512** Ladies' Polo



1562 Unisex Long-Sleeve Polo



1523 Unisex Polo with Pocket

ULTIMATE POLOS



FEATURES:

- 100% Polyester
- Snag-proof
- Good UV Protection
- Keeps its color for at least 50 home wash/dry cycles

SIZES:

Men's S-3XL, LT-6XLT, Scale H
 5512/5522: Ladies' XXS-4XL, Scale O
 5524: Ladies' XS-3XL, Scale O
 Unisex XXS-6XL, Scale V

FIT:

1512/5512/1522/5522/1523/1562: Traditional
 5524: Tailored

COLORS:

000 White, 007 Navy, 010 Black, 012 Red, 013 Burgundy, 041 Royal, 079 Steel Grey, 212 Silver Tan, 310 Fern Green, 909 Cool Grey

	000	007	010	012	013	041	079	212	310	909
1512	■	■	■	■	■	■	■	■	■	
5512	■	■	■	■	■	■	■	■	■	
1522	■	■	■	■		■	■		■	■
1523	■	■	■				■			
5522	■	■	■	■		■	■		■	■
5524	■	■	■	■		■	■		■	■
1562		■	■			■	■			



5579 Ladies' Polo

AIRGRID™ POLOS



FEATURES:

- 100% Polyester
- Snag-proof
- Very Good UV Protection
- Antimicrobial finish
- Side vents

SIZES:

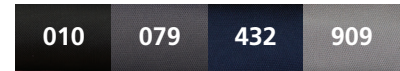
Men's S-3XL, 4XLT-6XLT, Scale H
Ladies' XXS-4XL, Scale O

FIT:

Traditional

COLORS:

010 Black, 079 Steel Grey,
432 Bright Navy, 909 Cool Grey



1579 Men's Polo



5590 Ladies' Polo

OPTICAL HEATHER POLOS



FEATURES:

- 88% Polyester/12% Spandex
- Excellent UV Protection
- Antimicrobial finish
- Side vents

SIZES:

Men's S-3XL, 4XLT-6XLT, Scale H

Ladies' XXS-4XL, Scale O

FIT:

Tailored

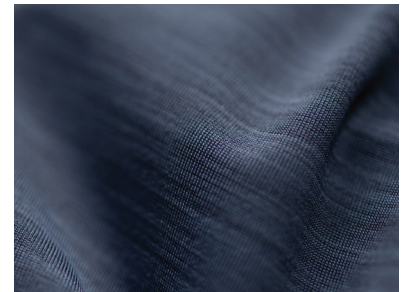
COLORS:

010 Black, 079 Steel Grey, 432 Bright Navy

010

079

432



Three-tone fabric.



1590 Men's Polo



8540
Ladies' EZ Fit Flat-Front Pant



2540 Men's EZ Fit Flat-Front Pant



2637 Men's Pleated-Front Pant



UTILITY CHINO PANTS



FEATURES:

- 65% Polyester/35% Cotton
- Your ultimate workwear pants
- Two front pockets and two back pockets (Ladies' have one)
- Cargo pocket has snap closure
- EZ Fit styles feature waistband providing an additional 2" of adjustment

SIZES:

Men's 28–60, Scale H
Ladies' 00–32, Scale O

FIT:

Traditional

COLORS:


005 Tan, 007 Navy, 010 Black, 089 Coal



2537 Men's / **8537** Ladies' Pant



2538 Men's / **8538** Ladies' Cargo Pant



2438
Men's Cargo Short



8435 Ladies' Short

2437 Men's Short

UTILITY CHINO SHORTS



FEATURES:

- 65% Polyester/35% Cotton
- Your ultimate workwear shorts
- Two front pockets and two back pockets (Ladies' have one)
- Cargo pocket has snap closure

SIZES:

Men's 28–60, Scale H

Ladies' 00–32, Scale O

FIT:

Traditional

COLORS:

005 Tan, 007 Navy, 010 Black, 089 Coal



8438 Ladies' Cargo Short



2439 Men's Pleated-Front Short



8558
Ladies' Pant





2558 Men's Pant

PERFORMANCE STRETCH PANTS

NEW STYLE



FEATURES:

- 98% Cotton/2% Spandex
- Made with U.S. Cotton
- 4-way stretch fabric increases comfort and flexibility
- Comfort stretch interior waistband
- Two front and two back pockets (Ladies' has one)

SIZES:

Men's 28–54, Scale H

Ladies' 0–32, Scale O

FIT:

Tailored

COLORS:

005 Tan, 010 Black, 017 Dark Navy,
079 Steel Grey





9935 Ladies' Dress

PONTE KNIT PANT & DRESS



FEATURES:

- 72% Polyester/24% Rayon/4% Spandex
- Comfort stretch for increased comfort and movement
- Pant has two faux front pockets and two back spade pockets
- Dress has angled front pockets, front princess seams and back darts

SIZES:

8571: Ladies' 0-28
(28", 30" or 32" Inseam), Scale O
9935: Ladies' 0-32, Scale O

FIT:

8571: Slim
9935: Tailored

COLORS:

007 Navy, 010 Black

007

010



8571 Ladies' Knit Pant



2483 Men's Flat-Front Short



2583 Men's Pant

FLEX CHINO PANTS & SHORTS

NEW STYLE



FEATURES:

- 95% Nylon / 5% Spandex
- Comfort stretch for increased comfort and movement
- Two curved front pockets and two back spade pockets

SIZES:

Men's 28-54, Scale H

Ladies' 0-32, Scale O

FIT:

Tailored

COLORS:

010 Black, 016 Ash Grey, 077 True Navy



8483 Ladies' Flat-Front Short



4496
Men's Dress Lapel
Vest





7398 Ladies' Ottoman Trim Vest



7496 Ladies' Dress Lapel Vest



4398 Men's Ottoman Trim Vest

HOSPITALITY VESTS



FEATURES:

- 100% Polyester
- 4398/7398: Faux welt pockets
- 4496/7496: Two functional welt pockets and adjustable back strap
- Self-fabric back
- Both styles feature Natural Stretch; 4496/7496 are Home Launder; 4398/7398 are Industrial Launder

SIZES:

4398: Men's S-6XL, Scale H

4496: Men's S-5XL, Scale H

7398: Ladies' XXS-4XL, Scale O

7496: Ladies' XS-4XL, Scale O

FIT:

Traditional

COLORS:

010 Black, 017 Dark Navy, 079 Steel Grey





7270 Ladies'
Tunic



4490 Men's Vest / 7490 Ladies' Vest

ESSENTIAL HOSPITALITY VESTS



FEATURES:

- 100% Polyester
- Two functional front pockets
- Matching buttons (red has gold buttons)

SIZES:

Men's S-XL, ST-5XLT, Scale I

7490: Ladies' XS-3XL, Scale K

7270: Ladies' XS-4XL, Scale K

FIT:

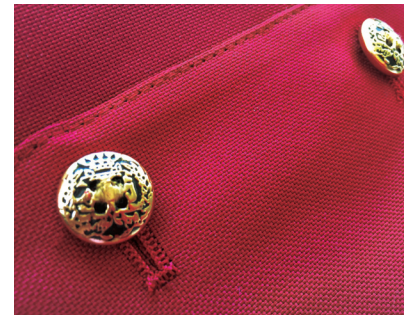
Traditional

COLORS:

007 Navy, 010 Black, 012 Red,

013 Burgundy, 017 Dark Navy

	007	010	012	013	017
4490	■	■	■	■	■
7270		■			■
7490	■	■	■	■	■



Stand out from the crowd.

4391
Men's Swirl Brocade
Vest





7391 Ladies' Swirl Brocade Vest

BROCADE VESTS



FEATURES:

- 100% Polyester
- Fully lined with adjustable back strap
- Two faux front pockets

SIZES:

Men's S-5XL, Scale I

Ladies' XS-3XL, Scale K

FIT:

Traditional

COLORS:

010 Black, 096 Silver



4390	▪	
4391	▪	▪
7390	▪	
7391	▪	▪



7390 Ladies' Diamond Brocade Vest



4390 Men's Diamond Brocade Vest



4550
Men's Vest
7550
Ladies' Vest



7551 Ladies' Tunic

FIRENZA VESTS



FEATURES:

- 95% Polyester/5% Spandex
- Added Spandex for increased comfort and flexibility
- Vests have two functional pockets
- Tunic has princess seams and two functional front pockets
- Fully lined

SIZES:

Men's S-5XL, ST-5XLT, Scale I

Ladies' XS-3XL, Scale J

FIT:

Traditional

COLORS:

010 Black

010



9097
3-Pocket Bib Denim



9098 3-Pocket Waist Denim **\$27.90**

DENIM APRONS



FEATURES:

- 100% Cotton
- Bib Apron has two hip pockets and one chest pocket
- Aprons include two straps, but additional straps are available for mix & match looks
- Straps are 65% Polyester/35% Cotton and are 80"L x 1"W

SIZES:

9097: 34"L x 28"W

9098: 19"L x 28"W

FIT:

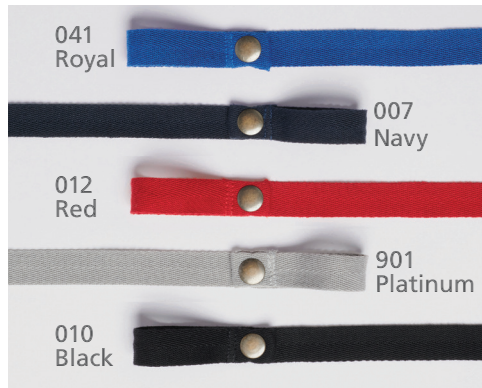
Traditional

COLORS:

914 Black Denim, 918 Indigo Denim



9091 Faux Leather Apron Straps (2-pack)



9096 Herringbone Apron Straps (2-pack)



9041
3-Pocket Waist Apron



9043 3-Pocket Bib Apron **\$22.50**

TWILL APRONS



FEATURES:

- 65% Polyester/35% Cotton Twill
- Bib Apron has two hip pockets and one chest pocket
- Aprons include two matching straps, but additional straps are available for mix & match looks
- Straps are 65% Polyester/35% Cotton and are 80" L x 1" W

SIZES:

9041: 19" L x 28" W

9043: 34" L x 28" W

FIT:

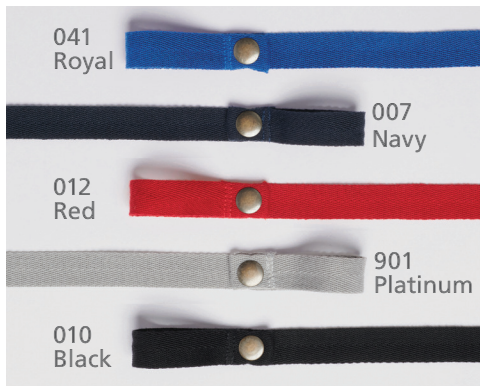
Traditional

COLORS:

007 Navy, 010 Black, 012 Red, 041 Royal



9091 Faux Leather Apron Straps
(2-pack)



9096 Herringbone Apron Straps
(2-pack)



Green Olive

TWILL APRONS



FEATURES:

- 65% Polyester/35% Cotton Twill
- Bar tacked stress points
- Extra-long ties
- Pockets sized for tablets

SIZES:

One Size Fits All

COLORS:

000 White, 007 Navy, 010 Black, 012 Red, 015 Khaki, 030 Black Pinstripe, 041 Royal, 063 Wine, 079 Steel Grey, 084 Hunter



9002
3-Pocket Bib Apron
24" L x 28" W



9003
3-Pocket Waist Apron
11" L x 23" W



9004
No-Pocket Bib Apron
28" L x 28" W



9005
2-Pocket Butcher Apron
34" L x 23" W



9009
2-Pocket V-Neck Bib Apron
32" L x 28" W

	000	007	010	012	015	030	041	063	079	084
9002	■	■	■	■	■	■	■	■	■	■
9003		■	■	■	■		■		■	
9004	■	■	■	■	■					
9005		■	■							
9009						■				



TWILL APRONS



FEATURES:

- 65% Polyester/35% Cotton Twill
- Bar tacked stress points
- Extra-long ties
- Pockets sized for tablets

COLORS:

007 Navy, 010 Black, 012 Red, 015 Khaki, 030 Black Pinstripe, 041 Royal, 063 Wine, 084 Hunter

SIZES:

One Size Fits All



9007
2-Pocket Half Bistro Apron
19"L x 28"W



9012
2-Pocket Long Bistro Apron
33"L x 28"W



4106
Apron Vest with Pockets
XS-4XL, Scale I



9006
Cobbler Apron
28"L x 17"W (regular), 31½"L x 17¾"W (tall)

	007	010	012	015	030	041	063	084
4106	■	■	■			■		■
9006	■	■	■	■		■	■	■
9007					■			
9012		■						



Barnock's
BISTRO
Ryan Miller

Barnock's
BISTRO



3331 Short-Sleeve Coat with 12 Buttons



3333 Short-Sleeve Coat with 10 Buttons



3363 Long-Sleeve Coat with 10 Buttons

CHEF COATS WITH MESH BACK



FEATURES:

- 65% Polyester/35% Cotton Twill
- Mesh back to keep the wearer cool and comfortable
- Features include a mitered breast pocket and thermometer pocket on sleeve
- Coats can be buttoned in either direction

SIZES:

Unisex XS–6XL, Scale V

FIT:

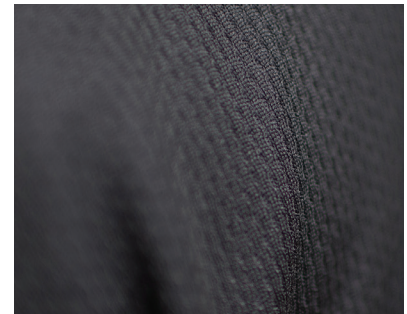
Traditional

COLORS:

000 White, 010 Black

000

010



Mesh back is breathable and moisture wicking.





3301 Unisex Long-Sleeve Coat with 10 Buttons



3302 Unisex Long-Sleeve Coat with 10 Knot Buttons



3306 Unisex Short-Sleeve Coat with 10 Buttons

CLASSIC CHEF COATS



FEATURES:

- 65% Polyester/35% Cotton Twill
- Features include a mitered breast pocket and thermometer pocket on sleeve
- Coats can be buttoned in either direction

SIZES:

Unisex XS–6XL, Scale V

FIT:

Traditional

COLORS:

000 White, 010 Black

000

010



Convenient pockets.



Varied button styles.



CLASSIC CHEF COAT



FEATURES:

- 65% Polyester/35% Cotton Twill
- Features include a mitered breast pocket and thermometer pocket on sleeve
- Coat can be buttoned in either direction

SIZES:

Unisex XS-6XL, Scale V

FIT:

Traditional

COLORS:

000 White

000



Turned-back cuff.

3300 Long-Sleeve Coat with 8 Buttons



1350 Bistro Shirt



1302 Cook Shirt with Snap Closure



1303 Cook Shirt with Button Closure



1305 Cook Shirt with Mesh Back

BISTRO & COOK SHIRTS



FEATURES:

- 65% Polyester/35% Cotton Twill
- Lightweight fabric keeps you cool
- Bistro Shirt has double-breasted placket and straight back yoke

SIZES:

Unisex XS–6XL, Scale V

FIT:

Traditional

COLORS:

000 White, 010 Black

	000	010
1302	▪	▪
1303		▪
1305		▪
1350		▪



2000 Basic Pant



2001 Traditional Pant



2003 Cargo Pant



2002 Ultimate Pant

CULINARY PANTS



FEATURES:

- 65% Polyester/35% Cotton Twill
- Two side pockets, one back pocket
- Cargo Pant has two side cargo pockets with Velcro® closure, a thermometer pocket and two towel loops

SIZES:

Unisex XS–6XL, Scale AC

FIT:

Traditional

COLORS:

010 Black, 030 Chalkstripe, 070 Houndstooth

	010	030	070
2000	■	■	
2001	■		
2002			■
2003	■		



Easy-access towel loops.



CULINARY HATS

FEATURES:
 Top off your culinary look with our variety of culinary hats

COLORS:
 000 White, 010 Black

SIZES:
 One Size Fits All

	000	010
HT00	▪	▪
HT01	▪	▪
HT02	▪	▪
HT03	▪	▪
HT04	▪	▪
HT05	▪	▪



HT00 Poplin Chef Hat



HT01 Skull Cap



HT02 Beanie with Elastic Back



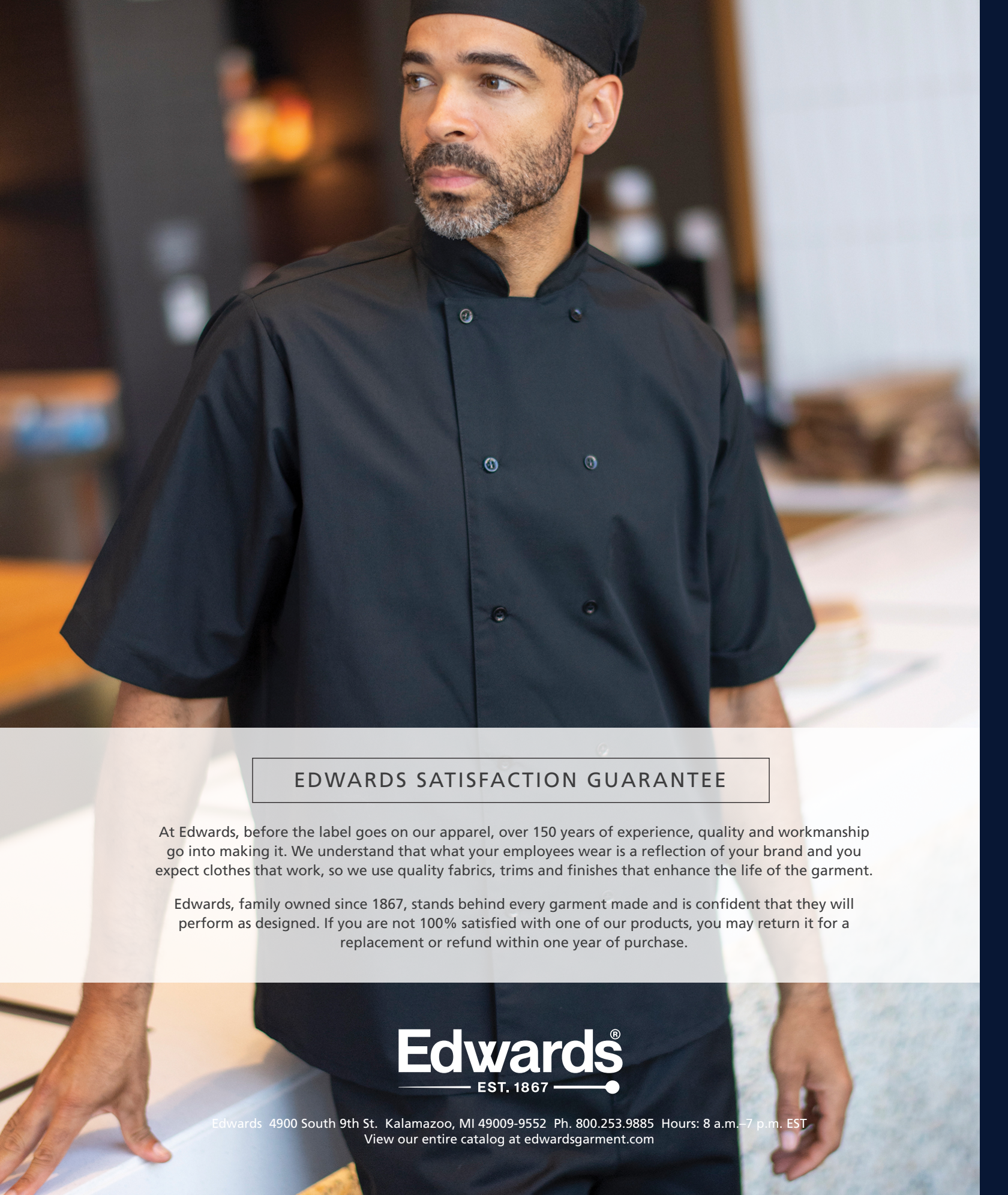
HT03 Ball Cap



HT04 Beanie with Self-Fastening Back



HT05 Beanie with Mesh Top



EDWARDS SATISFACTION GUARANTEE

At Edwards, before the label goes on our apparel, over 150 years of experience, quality and workmanship go into making it. We understand that what your employees wear is a reflection of your brand and you expect clothes that work, so we use quality fabrics, trims and finishes that enhance the life of the garment.

Edwards, family owned since 1867, stands behind every garment made and is confident that they will perform as designed. If you are not 100% satisfied with one of our products, you may return it for a replacement or refund within one year of purchase.

Edwards[®]
— EST. 1867 —

Edwards 4900 South 9th St. Kalamazoo, MI 49009-9552 Ph. 800.253.9885 Hours: 8 a.m.–7 p.m. EST
View our entire catalog at edwardsgarment.com