



**LAYERING STYLES**

2024



LAYERING

TOSS.  
ZIP.  
LAYER.  
STRETCH.

## Keep it under cover.

Refined, polished and ready for anything, our cozy jackets and sweaters are sure to be go-to favorites. Each style is designed for comfort, easy movement and the ability to withstand the demands of everyday wear for whatever industry you're in.



EASY CARE



INDUSTRIAL  
LAUNDRY



HOME LAUNDRY



MOISTURE WICKING



TUFF-PIL® PLUS



WATER RESISTANT



WATERPROOF





**4302** Heavyweight Vest



**4372** Heavyweight Cardigan



**4350** Cardigan with Pockets



**4351** Cardigan



**4381** Full-Zip Cardigan with Pockets



**4561** V-Neck Vest



**4565** V-Neck Sweater

# TUFF-PIL® PLUS ACRYLIC SWEATERS



**FEATURES:**

- 100% Acrylic
- Low-pil performance and durability
- Keeps its color for at least 50 home wash/dry cycles
- Dependable YKK zipper

**SIZES:**

Unisex XS–5XL, Scale V  
Ladies' XS–4XL, Scale O

**FIT:**

Traditional

**COLORS:**

007 Navy, 010 Black,  
019 Charcoal, 056 Grey Heather



**7059** Ladies' Open Cardigan



**7048** Ladies' Cardigan with Pockets

	007	010	019	056
4302	▪	▪		
4372	▪	▪		
4350	▪	▪		▪
4351	▪	▪		▪
4381	▪	▪		
4561	▪	▪	▪	▪
4565	▪	▪	▪	▪
7048	▪	▪		▪
7059		▪	▪	



4067 Sweater

## LIGHTWEIGHT ESSENTIAL ACRYLIC SWEATERS



### FEATURES:

- 100% Acrylic
- Keeps its color for at least 50 home wash/dry cycles
- Rib-knit collar, cuff and waist

### SIZES:

Unisex XXS–6XL, Scale V

### FIT:

Traditional

### COLORS:

007 Navy, 010 Black

007

010



4065 Vest



**4073** Full-Zip Cardigan

## TRI-BLEND SWEATERS



### FEATURES:

- 52% Cotton/31% Acrylic/17% Nylon
- Smooth, soft finish
- Sweater and Cardigan have stand-up collar
- Twinset contains cardigan and shell

### SIZES:

Unisex XS–5XL, Scale V

Ladies' XS–4XL, Scale O

### FIT:

Traditional

### COLORS:

007 Navy, 010 Black, 071 Sky Blue, 410 Navy Heather, 903 Smoke Heather



4072	▪	▪	▪	▪	▪
4073		▪		▪	▪
7138	▪	▪	▪		



**7138** Ladies' Twinset



**4072** 1/4-Zip Sweater



Stylish contrasting collar.



7046  
Shirttail Cardigan



7140 Jewel Neck Cardigan



7062 Full-Zip V-Neck Cardigan





**7058** Shawl Collar Cardigan



**7064** Full-Zip Cardigan



**7055** Scoop Neck Sweater



**7056** Open Cardigan

## LADIES' TRI-BLEND SWEATERS



### FEATURES:

- 52% Cotton/31% Acrylic/17% Nylon
- Smooth, soft finish
- Open and Shawl Collar Cardigans have two lower pockets
- Shirttail Cardigan has side vents

### SIZES:

Ladies' XS-4XL, Scale O

### FIT:

Traditional

### COLORS:

007 Navy, 010 Black, 056 Grey Heather, 429 Cobalt, 903 Smoke Heather

	007	010	056	429	903
7055	▪	▪			
7056	▪	▪	▪		▪
7058	▪	▪		▪	
7140	▪	▪			
7064	▪	▪			▪
7062		▪			▪
7046	▪	▪	▪		



## OPEN CARDIGAN & SWEATER JACKET



### FEATURES:

- 90% Acrylic/10% Nylon
- Sweater Jacket has mock turtleneck and raglan sleeves, side pockets
- Open Cardigan has cross-over front with ribbed neckline and opening, side pockets

### SIZES:

Unisex S-5XL, Scale V  
Ladies' XS-4XL, Scale O

### FIT:

Traditional

### COLORS:

007 Navy, 010 Black, 056 Grey Heather

**7053** Ladies' Open Cardigan



**4066** Unisex Sweater Jacket

	007	010	056
--	-----	-----	-----

4066	▪	▪	▪
7053	▪	▪	



**712** Unisex 1/4-Zip Sweater



**119** Ladies' Long Cardigan



**4080** Unisex Cardigan with Pockets



**4090** Unisex V-Neck Sweater

## COTTON BLEND SWEATERS



### FEATURES:

- 119/712: 87% Cotton/13% Nylon
- 4080/4090: 85% Cotton/15% Nylon
- Smooth, soft finish
- Added nylon for shape and stretch

### SIZES:

Unisex S-5XL, Scale V  
Ladies' XS-3XL, Scale O

### FIT:

Traditional

### COLORS:

007 Navy, 010 Black, 019 Charcoal,  
056 Grey Heather

	007	010	019	056
119	■	■		■
712	■	■	■	
4080	■	■		
4090	■	■		

**NEW STYLE**

**3465**

Men's /

**6465**

Ladies'

Herringbone

Jacket



**3460** Men's / **6460** Ladies' Jacket

## SWEATER KNIT OUTERWEAR



### FEATURES:

- 3460/6460/3463/6463: 100% Polyester
- 3465/6465: 87% Polyester/13% Rayon Herringbone Jacquard Fleece
- Soft fleece fibers trap heat

### SIZES:

Mens' S-6XL, Scale H

6460/6463: Ladies' XS-4XL, Scale O

6465: Ladies' XS-3XL, Scale O

### FIT:

Traditional

### COLORS:

113 Athletic Grey Heather,

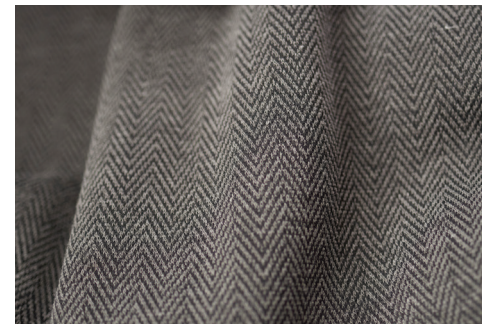
428 Blue Heather, 877 Steel Herringbone,

878 Navy Herringbone, 977 Black Heather




**3463** Men's / **6463** Ladies' Vest

	113	428	877	878	977
3460	▪	▪			▪
6460	▪	▪			▪
3463	▪	▪			▪
6463	▪	▪			▪
3465			▪	▪	
6465			▪	▪	



Popular herringbone pattern lends an air of distinction. (SHOWN PAGE 84)

A woman with long blonde hair, smiling, is wearing a grey zip-up jacket over a black top and black pants. She is walking towards the right. In the background, a man with short dark hair, also smiling, is wearing a dark navy blue zip-up jacket over a white shirt and dark pants, walking towards the left. The background is a blurred outdoor setting with a brick wall and a building.

**3428**  
Men's /  
**6428**  
Ladies' Jacket



3428 Men's Jacket

# LIGHTWEIGHT SOFT SHELL JACKETS

**NEW STYLE**



**FEATURES:**

- 94% Polyester/6% Spandex
- 4-way stretch for increased flexibility
- Wind proof
- Full-length wind guard
- Two side pockets

**SIZES:**

Men's S-5XL, Scale H  
Ladies' XS-3XL, Scale O


**FIT:**

Traditional

**COLORS:**

010 Black, 430 Deep Blue Heather,  
865 Heather Grey



A man with short, styled hair and a light beard is smiling and looking off to the side. He is wearing a dark navy blue zip-up pullover over a white collared shirt. He is standing in a bright, modern interior space with large windows and wooden accents. His right hand is resting on a surface, and his left hand is on his hip.

**3456**  
Unisex Pullover





# MICROFLEECE OUTERWEAR



### FEATURES:

- 100% Polyester
- Jackets and Vests have two side pockets, Pullover has none
- Men's Jacket has adjustable pull-cord hem

### SIZES:

Men's S-6XL, Scale H

Ladies' XS-4XL, Scale O

3456: Unisex XXS-6XL, Scale V

3455: Unisex XS-6XL, Scale V

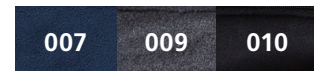
### FIT:

Traditional

### COLORS:

007 Navy, 009 Dark Grey, 010 Black

**3450** Men's / **6450** Ladies' Jacket



Anti-pilling brushed microfleece.

**3455** Unisex Vest



# PERFORMANCE TEK JACKETS

**NEW COLOR**



**FEATURES:**

- 100% Bonded Polyester Fleece
- Full-length wind guard
- Stand-up collar
- Two-layer bonded fabric provides strength and durability

**SIZES:**

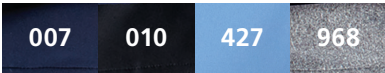
Men's S-6XL, Scale H  
Ladies' XS-4XL, Scale O

**FIT:**

Traditional

**COLORS:**

007 Navy, 010 Black, 427 Ceil (new),  
968 Grey Heather



Two-layer bonded fabric provides strength and durability.

**3440** Men's / **6440** Ladies' Jacket



## PERFORMANCE PULLOVER



### FEATURES:

- 90% Polyester/10% Spandex
- Breathable and durable fabric
- Contrasting inner collar, neck patch and zipper

### SIZES:

Unisex XXS-6XL, Scale V

### FIT:

Traditional

### COLORS:

007 Navy, 010 Black, 061 French Blue, 902 Titanium



3442 Unisex Pullover



# 3-SEASON JACKET



**FEATURES:**

- 100% Nylon outer layer; 100% Fleece inner layer
- Water repellent finish
- Premium anti-pilling lining and collar

**SIZES:**

Unisex XS-6XL, LT-3XLT, Scale V

**FIT:**

Traditional

**COLORS:**

007 Navy, 010 Black, 960 Navy/Charcoal, 961 Black/Charcoal, 962 Red/Charcoal, 964 Royal/Charcoal, 965 Forest/Charcoal



3410 Unisex Jacket



**3453** Unisex Jacket

## PUFFER JACKET



### FEATURES:

- 100% Nylon shell with Polyloft® insulation
- Insulation made from 12 plastic bottles
- Comes with a bag for packing

### SIZES:

Unisex XS-6XL, Scale V

### FIT:

Traditional

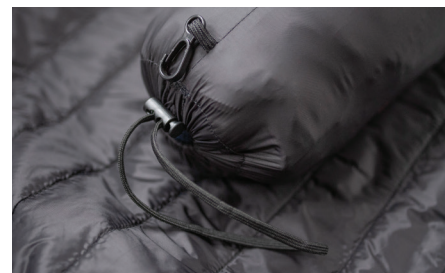
### COLORS:

007 Navy, 010 Black, 079 Steel Grey

007

010

079



Comes with bag for packing.



# RAIN JACKET



- FEATURES:**
- 100% Ripstop Nylon
  - Wind resistant
  - Collar features a hidden hood with Velcro® closure

**SIZES:**  
Unisex XXS–6XL, Scale V

**FIT:**  
Traditional

**COLORS:**  
007 Navy, 010 Black, 012 Red, 079 Steel Grey



The jacket packs in the pocket.

3435 Unisex Jacket



# COACH'S JACKET



## FEATURES:

- 100% Polyester
- Brushed tricot lining repels rain
- Adjustable drawstring waist

## SIZES:

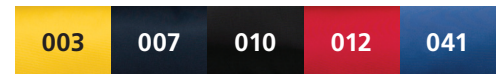
Unisex XS-6XL, Scale V

## FIT:

Traditional

## COLORS:

003 Yellow, 007 Navy, 010 Black,  
012 Red, 041 Royal



**3430** Unisex Jacket



## EDWARDS SATISFACTION GUARANTEE

At Edwards, before the label goes on our apparel, over 150 years of experience, quality and workmanship go into making it. We understand that what your employees wear is a reflection of your brand and you expect clothes that work, so we use quality fabrics, trims and finishes that enhance the life of the garment.

Edwards, family owned since 1867, stands behind every garment made and is confident that they will perform as designed. If you are not 100% satisfied with one of our products, you may return it for a replacement or refund within one year of purchase.

**Edwards**<sup>®</sup>  
— EST. 1867 —

Edwards 4900 South 9th St. Kalamazoo, MI 49009-9552 Ph. 800.253.9885 Hours: 8 a.m.-7 p.m. EST  
View our entire catalog at [edwardsgarment.com](http://edwardsgarment.com)