

NEW ARRIVALS

2024

The logo for Point Grey, featuring a white icon of a speech bubble with a checkmark inside, followed by the text "point grey" in a lowercase, sans-serif font, with a trademark symbol (TM) to the right. The logo is set against a solid orange square background.

point grey™

A young man with dark, curly hair is riding a black and red electric scooter on a paved sidewalk. He is wearing a dark grey suit jacket, a white shirt, a grey tie, and dark grey trousers. He is also wearing white sneakers with a black and white checkerboard pattern. He is leaning forward in a dynamic, athletic pose, looking towards the right. The background shows a brick building and some trees with autumn-colored leaves.

STRETCH.
RELAX.
PERFORM.
STYLE.

Modern arrivals.

The new Point Grey™ line is a fresh take on business casual apparel where fashion meets function. These crazy, comfortable designs make you feel like you're wearing your favorite joggers but look like you're meeting-ready. Combining upscale designs and a more tailored fit with incredible ergonomics and an extended range of motion allows you to go seamlessly from work life to real life without a wardrobe change. Feel good and look even better with Point Grey™.



SUSTAINABLE



EASY CARE



HOME LAUNDRY





3572
Men's Point Grey
Blazer

6572
Ladies' Point Grey
Blazer



3572 Men's Point Grey Blazer

POINT GREY BLAZERS

NEW STYLES



FEATURES:

- 57% Recycled Polyester/43% Sorona Polyester
- Four-way stretch fabric increases comfort and flexibility
- Antimicrobial, quick drying fabric
- Men's has single interior pocket

SIZES:

Men's Sizes: S-4XL, Scale H
Ladies' Sizes: XS-3XL, Scale O

FIT:

Tailored

COLORS:

010 Black, 097 Forged Iron,
431 Navy Agate

010

097

431



6572 Ladies' Point Grey Blazer



POINT GREY PANTS

NEW STYLES



FEATURES:

- 57% Recycled Polyester/43% Sorona Polyester
- Four-way stretch fabric increases comfort and flexibility
- Men's has hidden, secure zip, right hip pocket
- Two front pockets and two back pockets (Ladies' has one back pocket)

SIZES:

Men's Sizes: 28-54 (inseams 30", 32", 34"), Scale H

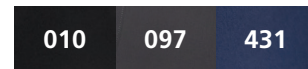
Ladies' Sizes: 0-28 (inseams 28", 30", 32"), Scale O

FIT:

Tailored

COLORS:

010 Black, 097 Forged Iron, 431 Navy Agate



8577 Ladies' Point Grey Pant



2572 Men's Point Grey Pant



5272 Ladies' Point Grey Shirt



POINT GREY SHIRTS

NEW STYLES



FEATURES:

- 52% Polyester/36% recycled Green Circle Polyester/12% Spandex
- Four-way stretch fabric increases comfort and flexibility
- Non-iron
- Moisture wicking and quick drying

SIZES:

Men's Sizes: S-3XL, MT-4XLT, Scale H

Ladies' Sizes: XXS-3XL, Scale O

FIT:

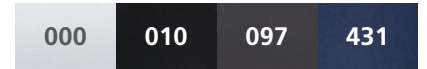
Tailored

COLORS:

000 White, 010 Black, 097 Forged Iron, 431 Navy Agate



1972 Men's Point Grey Shirt



A woman with blonde hair, smiling broadly, wearing a light purple short-sleeved t-shirt and black pants. She is standing outdoors in front of a brick building with a large window. Her hands are clasped in front of her.

NEW STYLE

5426
Shell Blouse



5428 Wrap Blouse



5097 Pleated Blouse

LADIES' SOFT BLOUSES

NEW STYLES



FEATURES:

- 95% Polyester/5% Spandex
- Soft jersey knit fabric
- Pleated blouse features a 2" front pleat and is great for those looking for a maternity blouse

SIZES:

Ladies' XS-3XL, Scale O

FIT:

Tailored

COLORS:

000 White, 001 Blue, 010 Black, 096 Silver, 253 Lilac

	000	001	010	096	253
5097	▪		▪		
5428	▪		▪		
5426	▪	▪	▪	▪	▪

NEW STYLE

5570

Ladies' Split
Neckline Polo





5507 Ladies' Polo

MINI-PIQUE POLOS



FEATURES:

- 100% Polyester
- Snag-proof
- Budget friendly polo for any program or event
- Hemmed bottom and sleeves

SIZES:

Men's S-3XL, 4XLT-6XLT, Scale H
 5507: Ladies' XXS-4XL, Scale O
 5570: Ladies' XS-3XL, Scale O
 Unisex XXS-3XL, 4XLT-6XLT, Scale V

FIT:

1507/5507/1527: Traditional
 5570: Tailored

COLORS:

000 White, 010 Black, 012 Red,
 041 Royal, 061 French Blue, 079 Steel Grey,
 091 Marina Blue, 249 High Visibility Lime,
 393 High Visibility Orange, 432 Bright Navy,
 909 Cool Grey



1507 Men's Polo



1527 Unisex Long-Sleeve Polo

	000	010	012	041	061	079	091	249	393	432	909
1507	■	■	■	■	■	■	■	■	■	■	■
1527	■	■	■	■	■	■	■	■	■	■	■
5507	■	■	■	■	■	■	■	■	■	■	■
5570	■	■	■	■	■	■	■	■	■	■	■



NEW STYLE

5524

Ladies' Lightweight
Polo with Split
Neckline



1522 Men's / **5522** Ladies' Lightweight Polo



1512 Men's / **5512** Ladies' Polo



1562 Unisex Long-Sleeve Polo



1523 Unisex Polo with Pocket

ULTIMATE POLOS



FEATURES:

- 100% Polyester
- Snag-proof
- Good UV Protection
- Keeps its color for at least 50 home wash/dry cycles

SIZES:

Men's S-3XL, LT-6XLT, Scale H
 5512/5522: Ladies' XXS-4XL, Scale O
 5524: Ladies' XS-3XL, Scale O
 Unisex XXS-6XL, Scale V

FIT:

1512/5512/1522/5522/1523/1562: Traditional
 5524: Tailored

COLORS:

000 White, 007 Navy, 010 Black, 012 Red, 013 Burgundy, 041 Royal, 079 Steel Grey, 212 Silver Tan, 310 Fern Green, 909 Cool Grey

	000	007	010	012	013	041	079	212	310	909
1512	■	■	■	■	■	■	■	■	■	
5512	■	■	■	■	■	■	■	■	■	
1522	■	■	■	■	■	■	■	■	■	■
1523	■	■	■	■	■	■	■	■	■	■
5522	■	■	■	■	■	■	■	■	■	■
5524	■	■	■	■	■	■	■	■	■	■
1562		■	■			■	■			



8558
Ladies' Pant





2558 Men's Pant

PERFORMANCE STRETCH PANTS

NEW STYLE



FEATURES:

- 98% Cotton/2% Spandex
- Made with U.S. Cotton
- 4-way stretch fabric increases comfort and flexibility
- Comfort stretch interior waistband
- Two front and two back pockets (Ladies' has one)

SIZES:

Men's 28-54, Scale H

Ladies' 0-32, Scale O

FIT:

Tailored

COLORS:

005 Tan, 010 Black, 017 Dark Navy, 079 Steel Grey



8583
Ladies' Pant





2483 Men's Flat-Front Short



2583 Men's Pant

FLEX CHINO PANTS & SHORTS

NEW STYLE



FEATURES:

- 95% Nylon / 5% Spandex
- Comfort stretch for increased comfort and movement
- Two curved front pockets and two back spade pockets

SIZES:

Men's 28-54, Scale H

Ladies' 0-32, Scale O

FIT:

Tailored

COLORS:

010 Black, 016 Ash Grey, 077 True Navy



8483 Ladies' Flat-Front Short



NEW STYLE

3465

Men's /

6465

Ladies'

Herringbone

Jacket



3460 Men's / **6460** Ladies' Jacket

SWEATER KNIT OUTERWEAR



FEATURES:

- 3460/6460/3463/6463: 100% Polyester
- 3465/6465: 87% Polyester/13% Rayon Herringbone Jacquard Fleece
- Soft fleece fibers trap heat

SIZES:

Mens' S-6XL, Scale H

6460/6463: Ladies' XS-4XL, Scale O

6465: Ladies' XS-3XL, Scale O

FIT:

Traditional

COLORS:

113 Athletic Grey Heather,

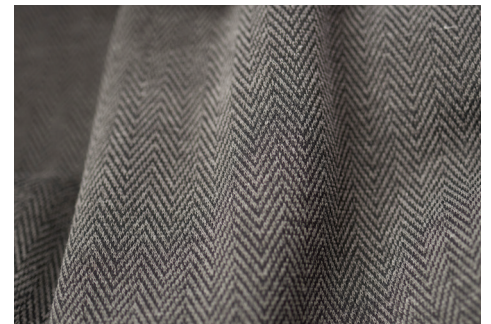
428 Blue Heather, 877 Steel Herringbone,

878 Navy Herringbone, 977 Black Heather



3463 Men's / **6463** Ladies' Vest

	113	428	877	878	977
3460	▪	▪			▪
6460	▪	▪			▪
3463	▪	▪			▪
6463	▪	▪			▪
3465			▪	▪	
6465			▪	▪	



Popular herringbone pattern lends an air of distinction. (SHOWN PAGE 84)



3428
Men's /
6428
Ladies' Jacket



3428 Men's Jacket

LIGHTWEIGHT SOFT SHELL JACKETS

NEW STYLE



FEATURES:

- 94% Polyester/6% Spandex
- 4-way stretch for increased flexibility
- Wind proof
- Full-length wind guard
- Two side pockets

SIZES:

Men's S-5XL, Scale H
Ladies' XS-3XL, Scale O

FIT:

Traditional

COLORS:

010 Black, 430 Deep Blue Heather,
865 Heather Grey





PERFORMANCE TEK JACKETS

NEW COLOR



FEATURES:

- 100% Bonded Polyester Fleece
- Full-length wind guard
- Stand-up collar
- Two-layer bonded fabric provides strength and durability

SIZES:

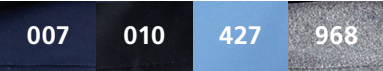
Men's S-6XL, Scale H
Ladies' XS-4XL, Scale O

FIT:

Traditional

COLORS:

007 Navy, 010 Black, 427 Ceil (new),
968 Grey Heather



Two-layer bonded fabric provides strength and durability.

3440 Men's / **6440** Ladies' Jacket

MELANGE HOUSEKEEPING COLLECTION

NEW COLORS



FEATURES:

- 100% Polyester
- Ultra-Light fabric keeps you cool
- 3M Scotchgard™ finish
- Retail-inspired melange pattern

SIZES:

1039: Men's S-3XL, 4XLT-6XLT, Scale H

4281: Men's S-4XL, Scale H

Ladies' XXS-4XL, Scale O

FIT:

Traditional

5041: Tailored

COLORS:

959 Cool Grey Heather,

973 Burgundy Heather (new),

977 Black Heather (new),

981 Carolina Blue Heather



5041 Ladies' Melange Camp Shirt



7279 Ladies' Tunic



1039 Men's Melange Camp Shirt



9097
3-Pocket Bib Denim



9098 3-Pocket Waist Denim

DENIM APRONS



FEATURES:

- 100% Cotton
- Bib Apron has two hip pockets and one chest pocket
- Aprons include two straps, but additional straps are available for mix & match looks
- Straps are 65% Polyester/35% Cotton and are 80"L x 1"W

SIZES:

9097: 34"L x 28"W

9098: 19"L x 28"W

FIT:

Traditional

COLORS:

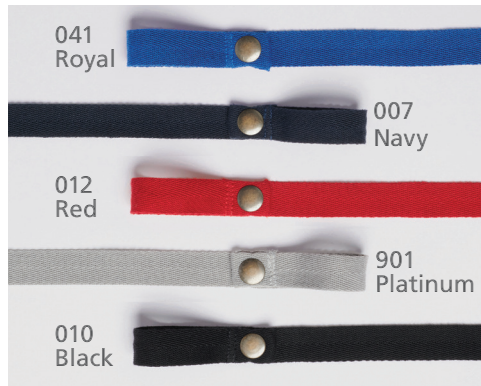
914 Black Denim, 918 Indigo Denim



922 Black

925 Brown

9091 Faux Leather Apron Straps (2-pack)



041

Royal

007

Navy

012

Red

901

Platinum

010

Black

9096 Herringbone Apron Straps (2-pack)



9041
3-Pocket Waist Apron



9043 3-Pocket Bib Apron

TWILL APRONS



FEATURES:

- 65% Polyester/35% Cotton Twill
- Bib Apron has two hip pockets and one chest pocket
- Aprons include two matching straps, but additional straps are available for mix & match looks
- Straps are 65% Polyester/35% Cotton and are 80" L x 1" W

SIZES:

9041: 19" L x 28" W

9043: 34" L x 28" W

FIT:

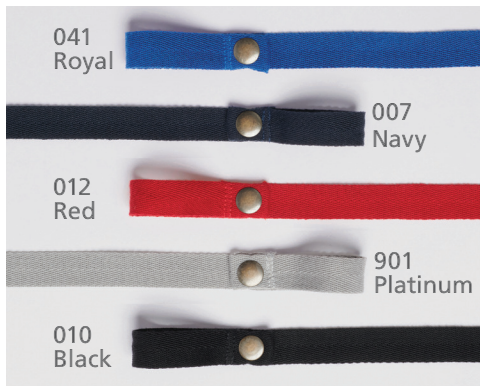
Traditional

COLORS:

007 Navy, 010 Black, 012 Red, 041 Royal



9091 Faux Leather Apron Straps
(2-pack)



9096 Herringbone Apron Straps
(2-pack)



EDWARDS SATISFACTION GUARANTEE

At Edwards, before the label goes on our apparel, over 150 years of experience, quality and workmanship go into making it. We understand that what your employees wear is a reflection of your brand and you expect clothes that work, so we use quality fabrics, trims and finishes that enhance the life of the garment.

Edwards, family owned since 1867, stands behind every garment made and is confident that they will perform as designed. If you are not 100% satisfied with one of our products, you may return it for a replacement or refund within one year of purchase.

Edwards[®]
— EST. 1867 —

Edwards 4900 South 9th St. Kalamazoo, MI 49009-9552 Ph. 800.253.9885 Hours: 8 a.m.-7 p.m. EST
View our entire catalog at edwardsgarment.com